

MONTHLY MEMBERSHIP PROGRESS REPORT

LOCATION INDIA

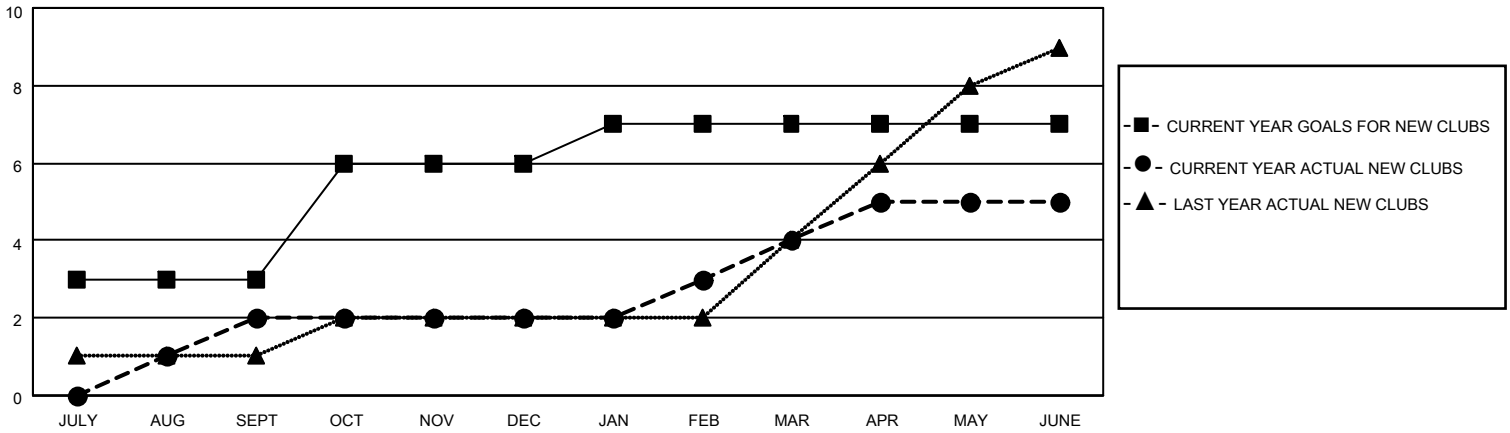
District 322C3

Results as of: 6/30/2023

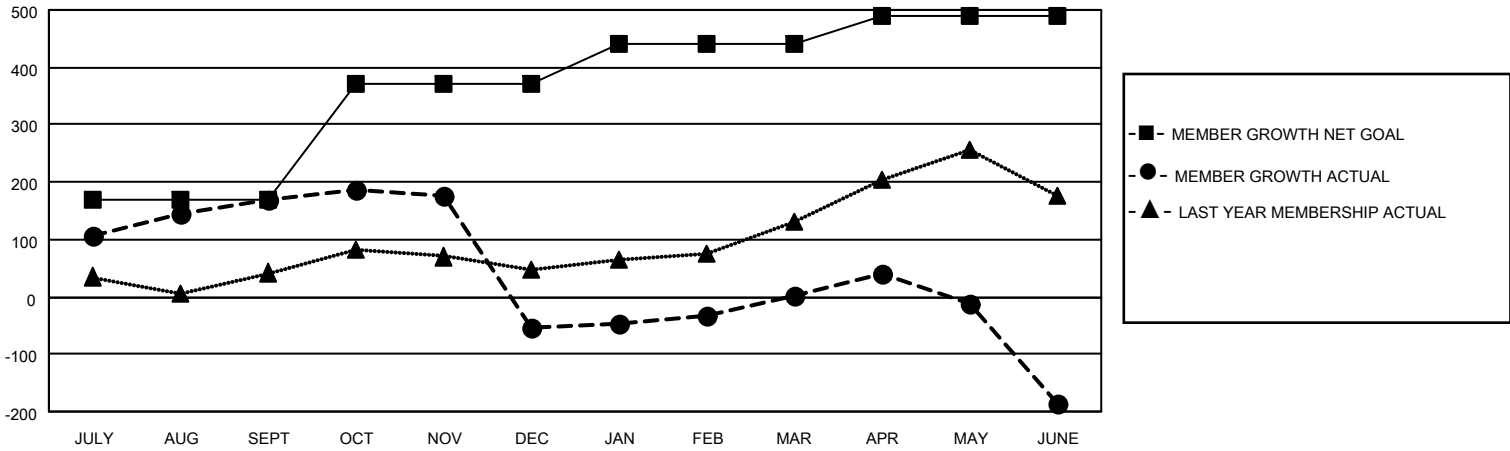
Clubs			
RESULTS FOR 2022-2023			
QUARTER	NEW CLUB GOAL	NEW CLUBS	DROPPED CLUBS
JULY/AUG/SEPT	3	2	0
OCT/NOV/DEC	3	0	5
JAN/FEB/MAR	1	2	2
APR/MAY/JUNE	0	1	3

Members			
RESULTS FOR 2022-2023			
QUARTER	MEMBER GROWTH NET GOAL	MEMBER GROWTH ACTUAL	DROPPED MEMBERS ACTUAL (including transfers)
JULY/AUG/SEPT	170	197	20
OCT/NOV/DEC	200	85	293
JAN/FEB/MAR	70	135	32
APR/MAY/JUNE	50	98	276

GOALS AND ACTUAL NEW CLUBS CUMULATIVE



GOALS AND ACTUAL MEMBERS CUMULATIVE



DROPPED CLUBS: 10	
DROPPED MEMBERS	
DECEASED	11
CLUB CANCELLED	200
OTHER	410
TOTAL	621

61 CLUBS OF 95 ADDED 1 OR MORE NEW MEMBERS

[CLICK HERE FOR CUMULATIVE MEMBERSHIP DATA](#)

<u>GENDER DISTRIBUTION</u>	
MALE	2,314 (74.14%)
FEMALE	807 (25.86%)
NON BINARY	0 (0.00%)
PREFER NOT TO ANSWER	0 (0.00%)
TOTAL FAMILY UNIT MEMBERS 2,057	
FAMILY MEMBERS PAYING HALF DUES 1,332	